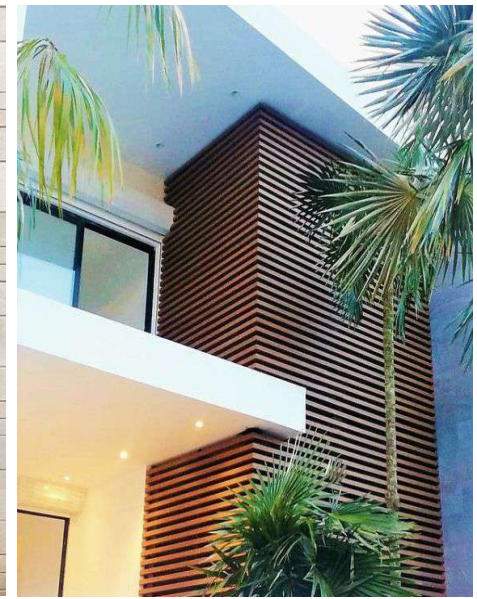


# EXTERIOR WALL CLADDING -WPC

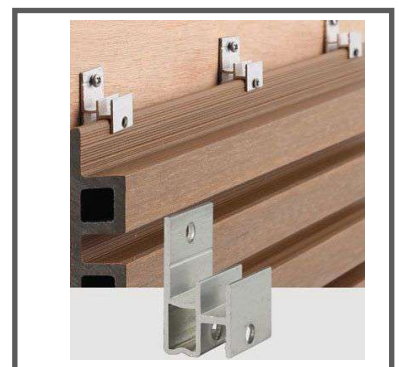
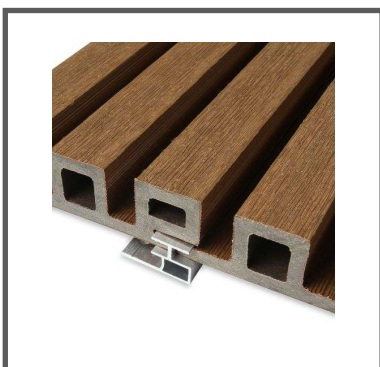
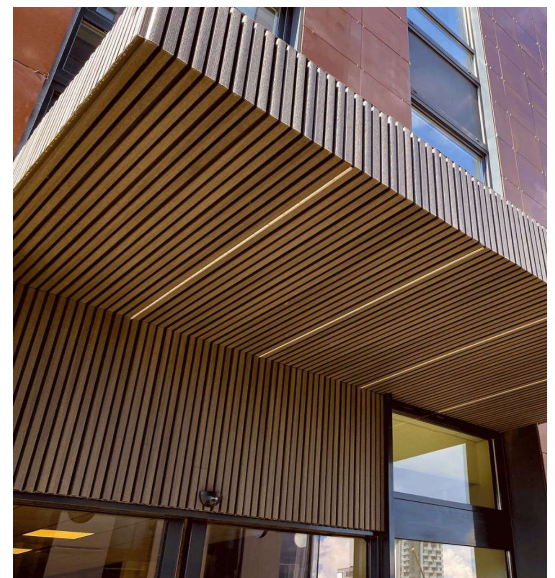
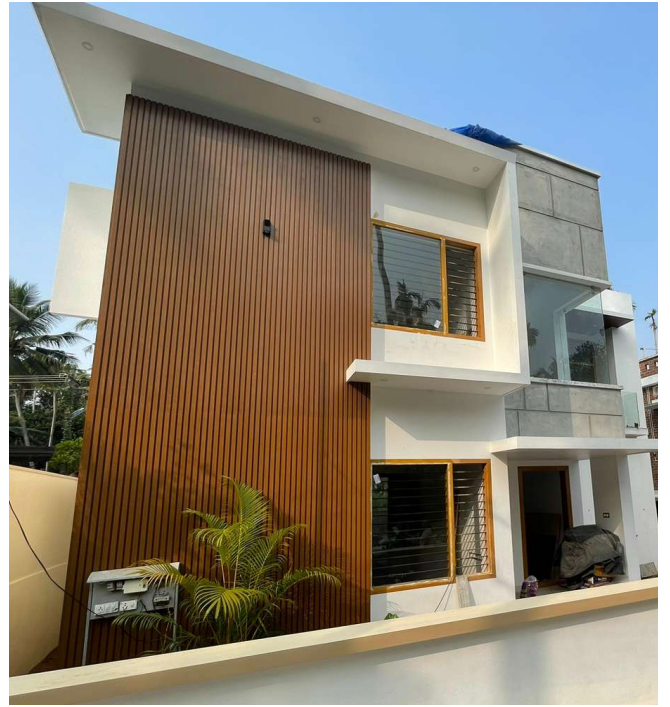








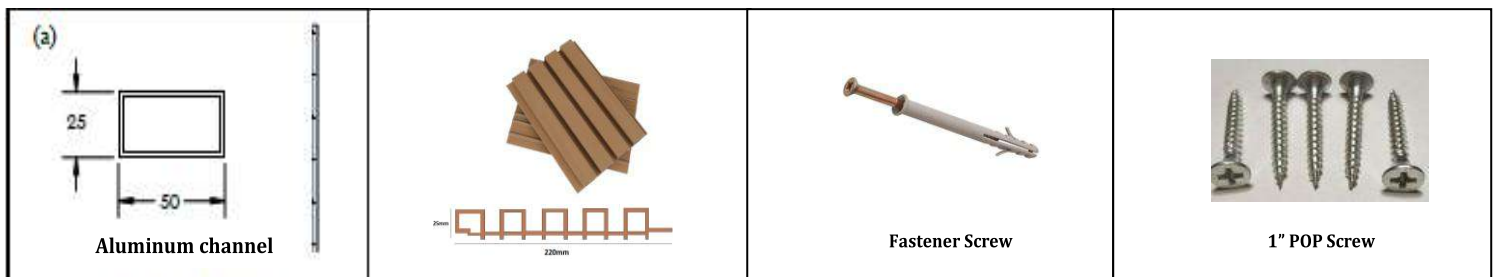
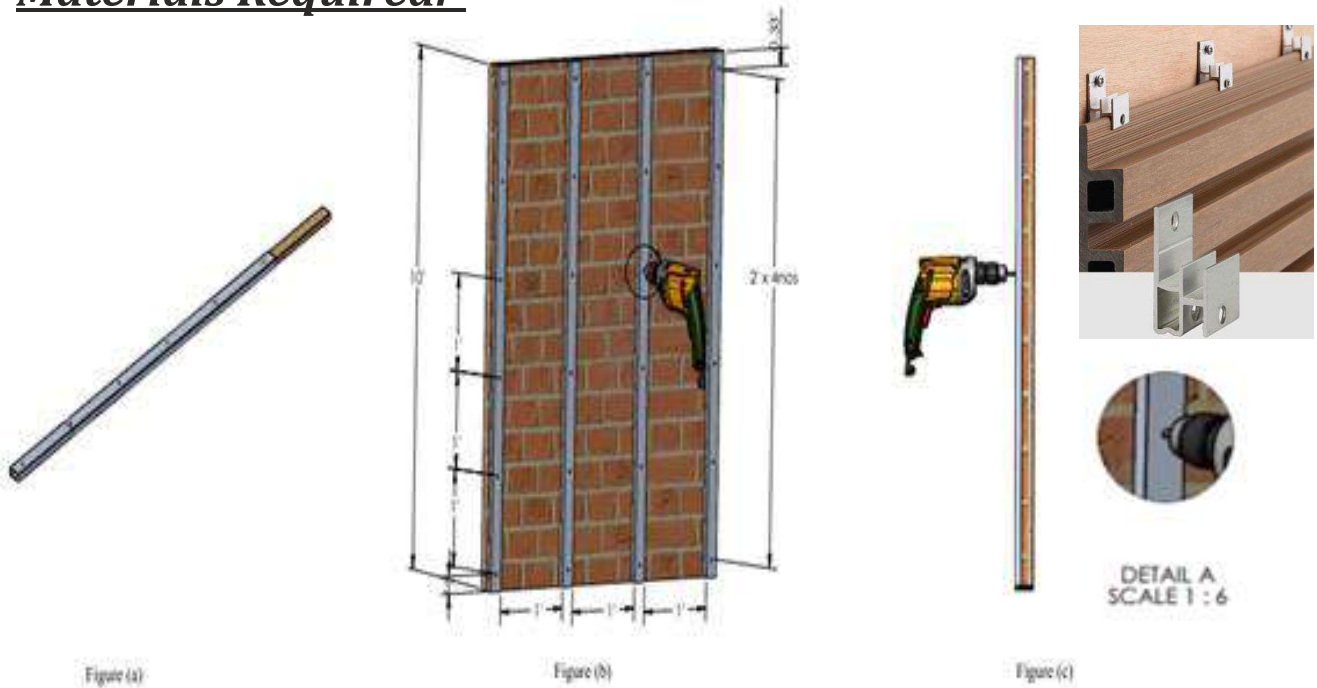
# EXTERIOR WALL CLADDING -WPC





## Installation Procedure

### Materials Required:-



### Step 1:

- Place the aluminum channels at the distance of 1 feet from each other's starting from edge.
- Make the holes at required positions as shown in the figure (b).

### Step 2:

- While making holes for channels the hole mark will be there in the wall.
- Then take the drilling gun machine and make holes to the wall then clean the holes and insert foscroc locking chemical inside the holes.
- Then screw with channels and 3" fastener screws.



# EXTERIOR WALL CLADDING -WPC



Brush finish

Glossy finish

**Tomlukes**  
INDIA

Innovative building products

A Concern of Thomson Group

**Customer care : 9747061221, 8590284580, 7736680444**

Trivandrum | Kottayam | Ernakulam | Kozhikode / [www.tomlukesindia.com](http://www.tomlukesindia.com)